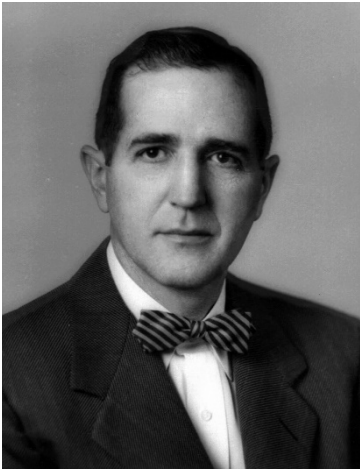


Kuhn & Newcomer Architectural Drawings



Norman B. Kuhn

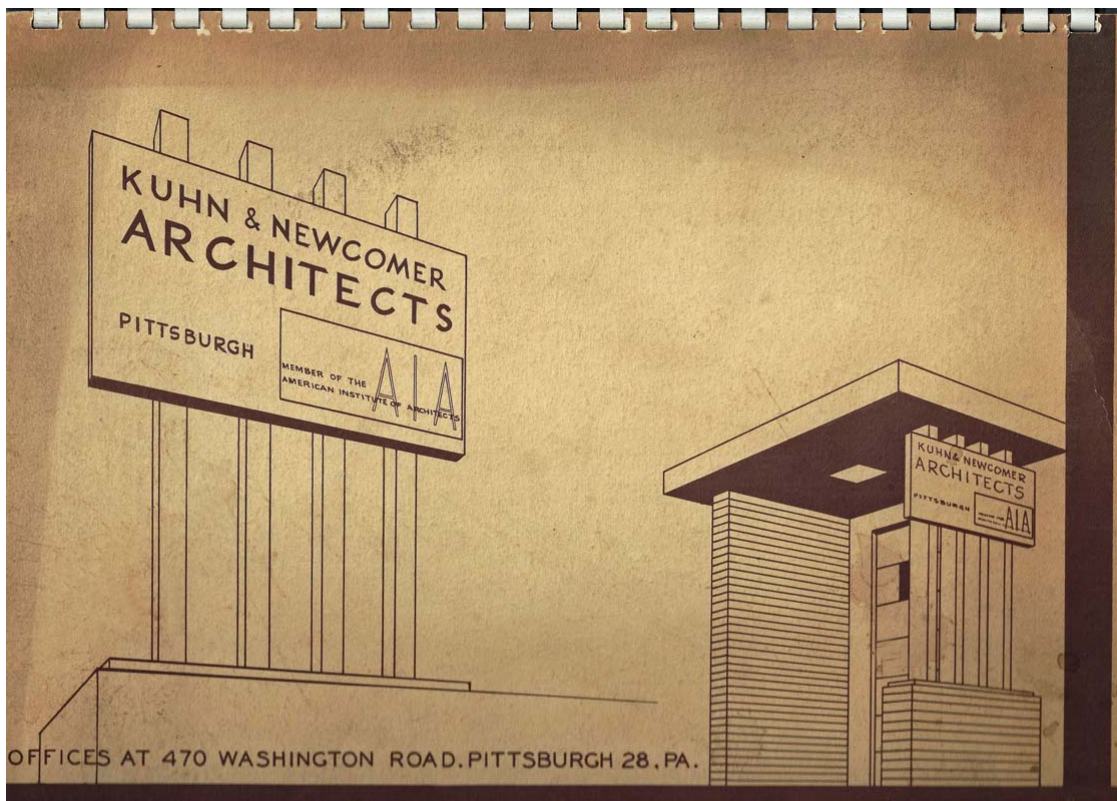
The architectural firm of Kuhn & Newcomer designed numerous projects including the Nurse's Home and the Woman's Dorm (Unit 2), both constructed from 1948 to 1950. Perspective drawings of both buildings were included in a spiral bound notebook found on eBay. Selected pages from the notebook are shown below.

The company is still in operation today, renamed VEBH Architects. It's website is at the following link:

<http://www.vebh.com/>



C. Edgar Newcomer



THE FIRM OF KUHN & NEWCOMER, REGISTERED ARCHITECTS WAS ESTABLISHED ON SEPTEMBER 1, 1945, WITH OFFICES AT 508 THIRD AVENUE, PITTSBURGH, PENNSYLVANIA.

THE FIRM MEMBERS ARE NORMAN B. KUHN, GRADUATE OF CARNEGIE INSTITUTE OF TECHNOLOGY, CLASS OF 1932 AND C. EDGAR NEWCOMER, GRADUATE OF PENNSYLVANIA STATE UNIVERSITY, CLASS OF 1932.

PRIOR TO THE FOUNDING OF THE PRESENT FIRM, THE PRINCIPALS SERVED IN THE CAPACITY OF CHIEF DRAFTSMEN IN ARCHITECTURAL OFFICES IN PITTSBURGH AND HARRISBURG AND AS PROJECT ARCHITECTS FOR WESTINGHOUSE ELECTRIC CORPORATION.

IN 1950 KUHN & NEWCOMER BUILT AND OCCUPIED THEIR OWN MODERN OFFICE BUILDING AT 470 WASHINGTON ROAD PITTSBURGH 28, PENNSYLVANIA.

ASSOCIATED WITH THE FIRM ON ALL PROJECTS ARE P. A. ZERN, STRUCTURAL ENGINEER; F. J. FIRSCHING, HEATING & AIR CONDITIONING ENGINEER; J. A. MURRAY, PLUMBING & SPRINKLER ENGINEER; AND J. G. STAUFFER, ELECTRICAL ENGINEER.

SOME CLIENTS FOR WHOM KUHN & NEWCOMER HAVE PERFORMED ARCHITECTURAL SERVICES

• • EDUCATIONAL • • • • •

CECIL TOWNSHIP SCHOOL DISTRICT
 CLAIRTON SCHOOL DISTRICT
 CLAYSVILLE SCHOOL DISTRICT
 INDEPENDENCE TOWNSHIP SCHOOL DISTRICT
 Mc DONALD SCHOOL DISTRICT
 NORTH STRABANE TOWNSHIP SCHOOL DISTRICT
 PENNSYLVANIA STATE UNIVERSITY
 ROBINSON TOWNSHIP SCHOOL DISTRICT

• • INSTITUTIONAL • • • • •

CRÉSSON TUBERCULOSIS SANATORIUM
 DIXMONT STATE HOSPITAL
 ST. CLAIR MEMORIAL HOSPITAL
 TORRANCE STATE HOSPITAL

• • INDUSTRIAL • • • • •

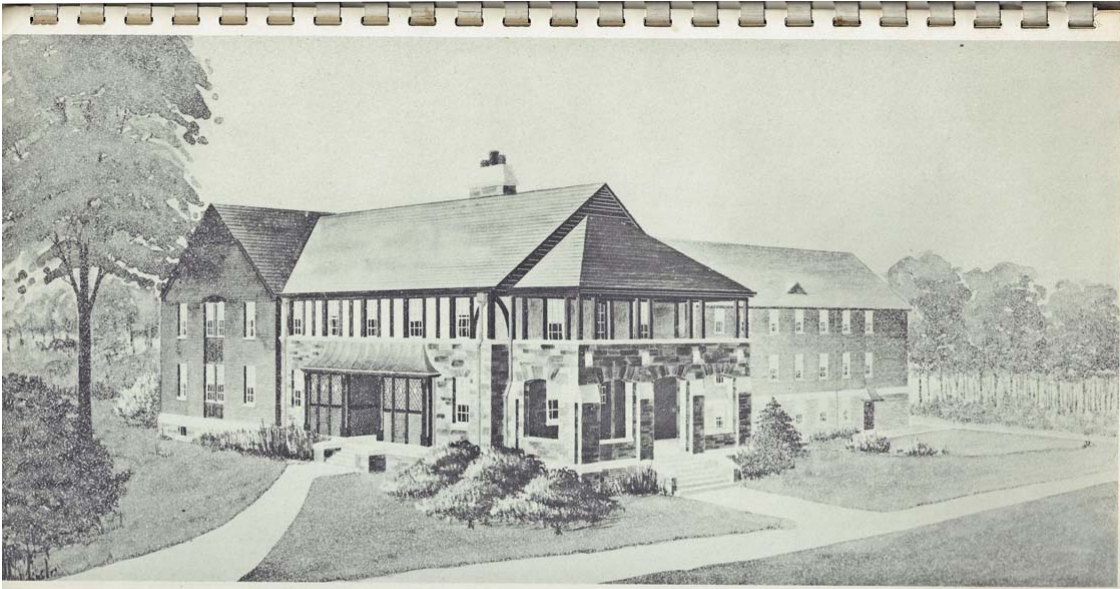
BEN CONSTRUCTION CO.
 BESSEMER & LAKE ERIE RAILROAD CO.
 DICK CORPORATION
 EICHLEAY CORPORATION
 HARRISON-WALKER REFRACTORIES CO.
 UNION RAILROAD CO.
 UNIVERSAL-ATLAS CEMENT CO.
 WESTINGHOUSE ELECTRIC CORPORATION

• • MISCELLANEOUS • • • • •

BOROUGH OF HOUSTON
 FIRST NATIONAL BANK OF CASTLE SHANNON
 MT. LEBANON GOLF CLUB
 PENNSYLVANIA STATE POLICE
 THIRD PRESBYTERIAN CHURCH OF UNIONTOWN

• • • • COMMERCIAL • • • •

CASTE DEVELOPMENT CO.
 HIGHWAY EQUIPMENT CO.
 HOLLAND CHEVROLET CO.
 L. D. CAULK CO.
 MILLER CHEVROLET CO.
 SEARS-ROEBUCK AND CO.



NURSES DORMITORY • TUBERCULOSIS SANATORIUM • CRESSON, PENNSYLVANIA •

- CONSTRUCTED 1948-1950
- TWO STORIES & BASEMENT
- HOUSING 75 NURSES
- \$425,000.00 CONSTRUCTION COST



• DORMITORY FOR FEMALE PATIENT EMPLOYEES • TUBERCULOSIS SANATORIUM, CRESSON, PA.

- CONSTRUCTED 1948-1950
- TWO STORIES & BASEMENT
- HOUSING 46 PATIENTS
- \$175,000.00 CONSTRUCTION COST

Architects Named For State Projects

Martin Assigns Officials to 42 Jobs

From Press Harrisburg Bureau

HARRISBURG, Jan. 26—Actual construction work on the State's 30 million dollar program to improve Pennsylvania institutions was moved a step nearer today with appointment by Gov. Edward Martin of architects and engineers for 42 of the projects.

They include:

Installation of boilers at Mayview State Hospital, allocation \$98,720, John M. Rice, Pittsburgh, engineer.

Construction of new west wing at Torrance State Hospital, allocation \$145,000, Prack & Prack, Pittsburgh, architects.

Nurses' Home, Cottages

Construction of nurses' home and cottages at Cresson Sanatorium, allocation, \$528,000, Kuhn and Newcomer, Pittsburgh, architects.

Article in the Pittsburg Press Newspaper on January 26, 1946 announces the award of the building contract for the Cresson San Nurses Home to Architects Kuhn and Newcomer.